

# INSTALLATION TOOLS

Difficult working conditions often apply in sanitary, heating and pipeline construction. Tight maintenance spaces and little freedom of movement sometimes come up against sensitive system components and materials, which is why GEDORE installation tools were developed.

GEDORE pipe cutters reliably deliver clean cuts on steel and cast iron pipes, electrical installation pipes, multi-layer composite pipes and other special pipes. There is no need for tedious deburring and the work is completed quickly.

The range of installation tools also offers flaring tools and matching accessories as well as different spanners that can be used to efficiently master everyday work.

GEDORE installation tools are developed for the sole purpose of supporting the user and making work efficient and safe - and this is evident in every single tool, from the cutting wheel to the radiator valve spanner. They are extremely robust and durable.



## TUBEX - A PROMISE

- High performance tube cutter for steel and cast iron tubes
- No. 222 especially suitable for tight spaces, 360° rotation not necessary
- Cutting wheel can be easily changed for processing stainless steel pipes
- For wall thicknesses from 2.0 to 8.0 mm



TOUGH  
RELIABLE

#### GREAT DIVERSITY IN FORM AND FUNCTION

- Wide range of specialised tools for installation and assembly work
- Individual or practical tool sets in GEDORE i-BOXX®es
- Spare parts and accessories optionally available

#### WORK ON FITTINGS

- Spanners especially for washbasin assembly, optionally with double jaws or reversible ratchets
- Special tools for working on and mounting valves
- Tools for quick and easy screwing and unscrewing of hanger bolts

#### WORKING ON THE RADIATOR

- Stepped and combination stepped keys for professional installation and removal of valve nipples and radiator valves
- Combination stepped key 380 can be combined with the radiator valve spanner 3810
- Trouble-free installation of straight and elbow compression fitting, even in corner or straight-through shapes

**210015**  
Link pipe cutter



- > Low space requirements due to ratchet-type operation
- > In the standard version suitable for pipes from 85 to 175 mm Ø
- > Expandable for tubes up to max. 330 mm outer-Ø

Code	No.	Ø mm	Wall thickness	
<b>4536250</b>	210015	85-175	3,2-8,0	5,7

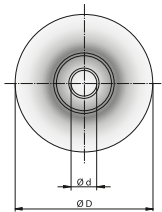
**E 210**  
Set of spare links  
3 pieces



- > For extending the cutting range at no. 210015
- > For more information see table "Cutting range link pipe cutter no. 210015"

Code	No.	Contents	Pieces	
<b>2799626</b>	210100	1 cutting wheel No. 210200 1 single link No. 210500 1 bolt no. 210600	3	0,395

**E 210**  
Spare parts



Code	No.	Designation	Ø D	b	Ø d	
<b>4536410</b>	210200	Cutting wheel for 210015	50	11	11	0,08
<b>4536680</b>	210600	Spare bolt for 210015				0,027
<b>4551480</b>	210500	Spare link for 210015				0,29

**220**  
Pipe cutter TUBEX



- > High-performance pipe cutter with 1 cutting wheel
- > Can also be used for stainless steel pipes by replacing the cutting wheel (2" version)
- > Spindle protected by sleeve extension

Code	No.	Size inch	Ø mm	Wall thickness	↳ mm ↲	
<b>4503400</b>	220020	1/8 - 2	10 mm - 60 mm	2,0-6,3	380	2,9
<b>4503590</b>	220040	1.1/4 - 4	42 mm - 114 mm	2,6-8,0	520	4,96

**222**  
Pipe cutter TUBEX

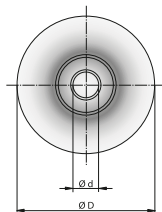


- > High-performance pipe cutter with 3 cutting wheels
- > Particularly suitable for hard-to-reach areas, as 360° rotation is not necessary
- > Can also be used for stainless steel pipes by replacing the cutting wheel (2" version)
- > Spindle protected by sleeve extension

Code	No.	Size inch	Ø mm	Wall thickness	↳ mm ↲	
<b>4537060</b>	222020	1/8-2	10-60	2,0-6,3	380	2,7
<b>4553420</b>	222040	1.1/4-4	48-114	2,6-8,0	520	4,84

### E 220 - E 222

Cutting wheel



Code	No.	Designation	Ø D	b	Ø d	
<b>1524038</b>	220221	Cutting wheel for niro tubes for 220020, 222020	32	19	9	0,028
<b>4503750</b>	220220	Cutting wheel for 220020, 222020	32	19	9	0,028
<b>4503830</b>	220240	Cutting wheel for 220040, 222040	41	19	9	0,038
<b>4552450</b>	220620	Wheel bolt for 220020, 222020				0,015
<b>4552530</b>	220640	Wheel bolt for 220040, 222040				0,019

### 2180

Pipe cutter



- > Easy cutting due to ball-bearing pressure rollers and cutting wheels
- > Cutting wheel changeable without tools
- > With retractable deburring tool, spare cutting wheel in handle

Code	No.	Ø mm	Wall thickness	↳ mm	
<b>2964066</b>	2180 3	3-35	0,7-2,5	160	0,365
<b>2964074</b>	2180 4	3-45	0,7-2,5	180	0,39
<b>2964082</b>	2180 5	6-76	0,7-2,5	245	0,94

### E-2180

Spare parts



Code	No.	Designation	Ø D	b	Ø d	
<b>2964090</b>	E-2180 3 A	Cutting wheel 20x5.1x4.8 mm	20	5,1	4,8	0,005
<b>2964104</b>	E-2180 5 A	Cutting wheel 20x6.2x4.8 mm	20	6,2	4,8	0,005
<b>2964112</b>	E-2180 3 B	Wheel bolt for 2180 3, 2180 4, 2250 3				0,002
<b>2964120</b>	E-2180 5 B	Wheel bolt for 2180 5, 2270 5				0,005

### 230311

Pipe cutter  
QUICK AUTOMATIC  
niro

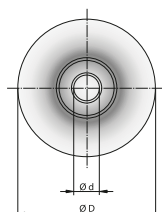


- > Body in pressure-cast zinc
- > Cutting wheel made from high-alloy stainless steel, with high service life
- > With automatic infeed by plate springs

Code	No.	Ø mm	Wall thickness	↳ mm	
<b>1154990</b>	230311	4-32	0,7-3,0	165	0,43

### E 2303

Cutting wheel



Code	No.	Designation	Ø D	b	Ø d	
<b>1154540</b>	230621	Wheel bolt size 2 for niro tubes				0,003
<b>1154680</b>	230421	Cutting wheel for niro tubes 32x9,9x6,1 mm	32	9,9	6,1	0,018
<b>1154710</b>	230411	Cutting wheel for niro tubes 20x4,8x5,1 mm	20	4,8	5,1	0,005

## Installation Tools

### 2325 Pipe deburring reamer



- > For internal and external deburring
- > Aluminiumkörper
- > Hardened taper section with 40 deburring blades

Code	No.	Ø mm	l mm	kg
1419684	232500	10-56	85	0,42
1857681	232501	8-35	60	0,18

### 232001 Pipe deburring reamer



- > Universal use for hydraulic and precision steel pipes, copper pipes, as well as pipes in non-ferrous metals
- > For internal and external deburring

Code	No.	Ø mm	l mm	kg
1439510	232001	4-32	45	0,03

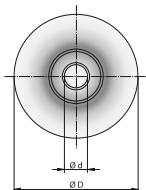
### 2250 Pipe cutter



- > For copper, brass, and light-alloy pipes, PVC hard plastic and plastic-coated pipes, thin-walled steel pipes, (precision steel and hydraulic pipes), composite pipes
- > Cutting wheel changeable without tools
- > With retractable deburring tool, spare cutting wheel in handle

Code	No.	Ø mm	Wall thickness	l mm	kg
2964031	2250 3	3-35	0,7-2,0	160	0,37

### E 2250 3 A Cutting wheel



Code	No.	Designation	Ø D	b	Ø d	kg
2964058	E-225 3 A	Cutting wheel 20x5.1x4.8 mm	20	5	4,8	0,005

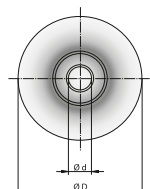
**2300**  
Pipe cutter  
QUICK AUTOMATIC



- > Body in pressure-cast zinc
- > For copper, brass, and light-alloy pipes, PVC hard plastic and plastic-coated pipes, thin-walled steel pipes, (precision steel and hydraulic pipes), composite pipes
- > With automatic infeed by plate springs, retractable deburring knife

Code	No.	Ø mm	Wall thickness	↳ mm ↲	kg
4504050	230010	4-32	0,7-3,0	165	0,435
4504130	230020	13-65	1,0-7,3	275	1,46

**E 2300**  
Cutting wheel



Code	No.	Designation	Ø D	b	Ø d	kg
4504800	230220	Cutting wheel 32x9,9x6,1 mm	32	9,9	6,1	0,018

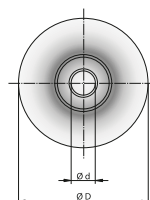
**231000**  
Miniature Pipe Cutter  
MINI-QUICK



- > For use in barely accessible places
- > For copper, brass, and light-alloy pipes, PVC hard plastic and plastic-coated pipes, thin-walled steel pipes, (precision steel and hydraulic pipes), composite pipes


Code	No.	Ø mm	Wall thickness	↳ mm ↲	kg
4504560	231000	4-16	0,7-3,0	50	0,125


**E 2310**  
Cutting wheel





Code	No.	Designation	Ø D	b	Ø d	kg
1154656	230611	Wheel bolt size 1 for niro tubes				0,003
4504640	230210	Cutting wheel 20x4,8x5,1 mm	20	5	5,1	0,005

## Installation Tools

239 Calibration tool		<table border="1"> <thead> <tr> <th>Code</th> <th>No.</th> <th>Ø mm</th> <th colspan="2"></th> <th></th> </tr> </thead> <tbody> <tr> <td>4506340</td> <td>239012</td> <td>12x1</td> <td colspan="2"></td> <td>0,067</td> </tr> <tr> <td>4506420</td> <td>239015</td> <td>15x1</td> <td colspan="2"></td> <td>0,138</td> </tr> <tr> <td>4506500</td> <td>239018</td> <td>18x1</td> <td colspan="2"></td> <td>0,179</td> </tr> <tr> <td>4506690</td> <td>239022</td> <td>22x1</td> <td colspan="2"></td> <td>0,27</td> </tr> </tbody> </table>				Code	No.	Ø mm				4506340	239012	12x1			0,067	4506420	239015	15x1			0,138	4506500	239018	18x1			0,179	4506690	239022	22x1			0,27
Code	No.	Ø mm																																	
4506340	239012	12x1			0,067																														
4506420	239015	15x1			0,138																														
4506500	239018	18x1			0,179																														
4506690	239022	22x1			0,27																														
 <ul style="list-style-type: none"> <li>&gt; For exact calibrating of tube ends</li> <li>&gt; For semi-hard and soft copper pipes</li> </ul>																																			

2270 Pipe cutter		<table border="1"> <thead> <tr> <th>Code</th> <th>No.</th> <th>Ø mm</th> <th>Wall thickness</th> <th>↳ mm</th> <th></th> </tr> </thead> <tbody> <tr> <td>2964015</td> <td>2270 5</td> <td>6-76</td> <td>1,5-8,6</td> <td>245</td> <td>0,93</td> </tr> <tr> <td>2963957</td> <td>2270 6</td> <td>50-127</td> <td>4,0-19,8</td> <td>345</td> <td>1,73</td> </tr> </tbody> </table>					Code	No.	Ø mm	Wall thickness	↳ mm		2964015	2270 5	6-76	1,5-8,6	245	0,93	2963957	2270 6	50-127	4,0-19,8	345	1,73
Code	No.	Ø mm	Wall thickness	↳ mm																				
2964015	2270 5	6-76	1,5-8,6	245	0,93																			
2963957	2270 6	50-127	4,0-19,8	345	1,73																			
 <ul style="list-style-type: none"> <li>&gt; To cleanly cut multi-layer composite pipes or other plastic pipes</li> <li>&gt; Cutting wheel changeable without tools</li> <li>&gt; With retractable deburring tool, spare cutting wheel in handle</li> <li>&gt; No. 2270 5 with adjustable third pressure roller for optimum guidance of different pipe dimensions</li> <li>&gt; With high-speed adjustment feature</li> </ul>																								

E 2270 Cutting wheel		<table border="1"> <thead> <tr> <th>Code</th> <th>No.</th> <th>Designation</th> <th>Ø D</th> <th>b</th> <th>Ø d</th> <th></th> </tr> </thead> <tbody> <tr> <td>2963973</td> <td>E-2270 6 A</td> <td>Cutting wheel 51x11x8.1 mm</td> <td>51</td> <td>11</td> <td>8,1</td> <td>0,02</td> </tr> <tr> <td>2963981</td> <td>E-2270 6 B</td> <td>Wheel bolt for 2270 6</td> <td></td> <td></td> <td></td> <td>0,01</td> </tr> <tr> <td>2964023</td> <td>E-2270 5 A</td> <td>Cutting wheel 30x6.2x4.8 mm</td> <td>30</td> <td>6</td> <td>4,8</td> <td>0,01</td> </tr> </tbody> </table>					Code	No.	Designation	Ø D	b	Ø d		2963973	E-2270 6 A	Cutting wheel 51x11x8.1 mm	51	11	8,1	0,02	2963981	E-2270 6 B	Wheel bolt for 2270 6				0,01	2964023	E-2270 5 A	Cutting wheel 30x6.2x4.8 mm	30	6	4,8	0,01
Code	No.	Designation	Ø D	b	Ø d																													
2963973	E-2270 6 A	Cutting wheel 51x11x8.1 mm	51	11	8,1	0,02																												
2963981	E-2270 6 B	Wheel bolt for 2270 6				0,01																												
2964023	E-2270 5 A	Cutting wheel 30x6.2x4.8 mm	30	6	4,8	0,01																												
																																		

226100 Shear set for plastic pipes		<table border="1"> <thead> <tr> <th>Code</th> <th>No.</th> <th>Contents</th> <th>Pieces</th> <th></th> </tr> </thead> <tbody> <tr> <td>1637983</td> <td>226100</td> <td>Shear set for plastic pipes</td> <td>6</td> <td>1,05</td> </tr> </tbody> </table>				Code	No.	Contents	Pieces		1637983	226100	Shear set for plastic pipes	6	1,05
Code	No.	Contents	Pieces												
1637983	226100	Shear set for plastic pipes	6	1,05											
 <ul style="list-style-type: none"> <li>&gt; To cleanly cut hard and soft plastic pipes, rubber hoses with or without textile reinforcement, and as well as various plastic profiled sections, such as cable ducts, for example</li> <li>&gt; Contains 2 form blocks for 16, 19 and 25 mm pipes, 1 prism for profiles and 1 angle stop adjustable up to 45°</li> <li>&gt; Delivery in plastic case</li> </ul>															

**E 2261**  
cutting knife



Code	No.	Designation	
<b>1680137</b>	226005	Spare knife	0,05

**2268**  
Pipe shears



- > For the clean cutting of PE, PP, PEX, PPR, MSR, CPVC, PVC, PVDF, PB and VPE pipes
- > Can also be used for hoses
- > Smooth and accurate cutting, one hand operation
- > Cutting blades changeable without tools

Code	No.	Ø mm	↳ mm	
<b>2963841</b>	2268 2	42	245	0,475
<b>2963892</b>	2268 3	63	280	0,65

**E-2268**  
cutting knife



Code	No.	Designation	
<b>2963914</b>	E-2268 2 A	Spare knife for 2268 2	0,085
<b>2963930</b>	E-2268 3 A	Spare knife for 2268 3	0,15
<b>2963949</b>	E-2268 B	Spare bolt for 2268 2 / 3	0,005

**2330**  
Flaring tool



- > For flaring copper and light-alloy pipes of various hardnesses
- > For cooling systems, refrigeration technique
- > Flared cone 90° hardened = 45° bending from the tube
- > With cone for 180° flaring = 90° angle from pipe

Code	No.	Contents	Pieces	
<b>4537300</b>	233001	for metric tubes 4, 4.75, 6, 8, 10, 12, 14 mm 1 Flare body No. 233000 1 thrust piece 180° No. 233200 1 clamping jaw 4-14 mm No. 233101	3	1,4
<b>4554660</b>	233007	for inch pipes 3/16, 1/4, 5/16, 3/8, 7/16, 1/2, 5/8, 3/4" 1 flaring tool No. 233000 1 cone for 180° flaring No. 233200 1 clamping jaw 3/16-3/4" No. 233107	3	1,46
<b>1919725</b>	233009	for metric pipes 15, 16, 17, 18, 19 mm 1 flaring tool No. 233000 1 cone for 180° flaring No. 233200 1 clamping jaw 15-19 mm No. 233109	3	1,205
<b>2926741</b>	233013	for metric tubes 4, 4.75, 6, 8, 10, 12, 14 mm for inch pipes 3/16, 1/4, 5/16, 3/8, 7/16, 1/2, 5/8, 3/4". 1 Flare body No. 233000 1 thrust piece 180° No. 233200 1 clamping jaw 4-14 mm No. 233101 1 clamping jaw 3/16-3/4" No. 233107	4	2,02
<b>2926768</b>	233014	for metric pipes 4, 4.75, 6, 8, 10, 12, 14, 15, 16, 17, 18, 19 mm 1 flaring tool No. 233000 1 cone for 180° flaring No. 233200 1 clamping jaw 4-14 mm No. 233101 1 clamping jaw 15-19 mm No. 233109	4	1,87



**1101-233301**

Tool set  
5 pieces



- › For flaring copper and light-alloy pipes of various hardnesses
- › For cooling systems, refrigeration technique
- › With pipe cutter 3-35 mm Ø
- › In GEDORE i-BOXX® 72 No. 1101 L

Code	No.	Contents	Pieces	
<b>4555550</b>	1101-233301	for metric tubes 4, 4.75, 6, 8, 10, 12, 14 mm 1 Flare body No. 233000 1 clamping jaw 4-14 mm No. 233101 1 thrust piece 180° No. 233200 1 Pipe cutter 3-35 mm Ø No. 2250 3 1 GEDORE i-BOXX® 72 No. 1101 L	5	2,89

**E 2330**

Parts



Code	No.	Designation	
<b>1885162</b>	233109	Clamping jaw 15-19 mm	0,555
<b>4505450</b>	233200	Cone for 180° flaring (= 90° angled from pipe)	0,015
<b>4554150</b>	233000	Flaring tools	0,66
<b>4554820</b>	233101	Clamping jaw 4-14 mm	0,62
<b>4555470</b>	233107	Clamping jaw 3/16" - 3/4"	0,68

**1101-2340**

Double flaring tool set



- › For precision flanges according to DIN 74234
- › For brake lines, coolant lines, hydraulic and pneumatic pipes with a wall thickness of 0.7 to 1.0 mm
- › Complete set for metric and/or inch pipes
- › With pipe deburring reamer 4-32 mm Ø and miniature pipe cutter 4-16 mm Ø
- › In GEDORE i-BOXX® 72 No. 1101 L

Code	No.	Contents	Pieces	
<b>4662980</b>	1101-234013	for metric + inch pipes 1 basic frame No. 234000 2 clamping jaws No. 234101 + 234102 6 cones 4,75-10 mm No. 234204-234210 4 cones 3/16-3/8" No. 234303-234306 3 cones No. 234790 + 234801-802 1 miniature pipe cutter 4-16 mm Ø No. 231000 1 pipe deburring reamer Ø 4-32 mm No. 232001 1 GEDORE i-BOXX® 72 No. 1101 L	19	4,2
<b>4505530</b>	1101-234001	for metric pipes 1 basic frame No. 234000 1 clamping jaw metric No. 234101 6 cones 4,75-10 mm No. 234204-234210 2 cones No. 234790 + 234801 1 miniature pipe cutter 4-16 mm Ø No. 231000 1 pipe deburring reamer Ø 4-32 mm No. 232001 1 GEDORE i-BOXX® 72 No. 1101 L	13	2,98

**E 234**

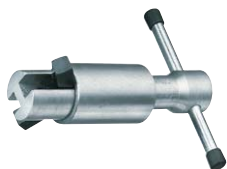
Parts



Code	No.	Designation	
<b>4556440</b>	234000	Basic frame	0,88
<b>4556520</b>	234101	Clamping jaw metric	0,76
<b>4556600</b>	234102	Clamping jaw inch	0,76
<b>4556790</b>	234204	Cone 4,75 mm for flare types E + F	0,018
<b>4556870</b>	234205	Cone 5 mm for flare types E + F	0,018
<b>4556950</b>	234206	Cone 6 mm for flare types E + F	0,018
<b>4557090</b>	234208	Cone 8 mm for flare types E + F	0,018
<b>4557170</b>	234209	Cone 9 mm for flare types E + F	0,018
<b>4557250</b>	234210	Cone 10 mm for flare types E + F	0,018
<b>4557330</b>	234303	Cone 3/16" for flare types E + F	0,018
<b>4557410</b>	234304	Cone 1/4" for flare types E + F	0,018
<b>4557680</b>	234305	Cone 5/16" for flare types E + F	0,018
<b>4557760</b>	234306	Cone 3/8" for flare types E + F	0,018
<b>4557840</b>	234790	Cone (adjustment gauge) for flare types 90° + 180° and cone 90° + flare E	0,016
<b>4557920</b>	234801	Cone (adjustment gauge), metric, 180°, for flare types E + F	0,011
<b>4558060</b>	234802	Cone (adjustment gauge), inch, 180°, for flare types E+F	0,011

## 312

Valve holder venti-quick



- > Made of aluminium
- > Drain valve holder and screw-in wrench for eccentric and standard valves 1.1/4
- > Usable from top or bottom

Code	No.	↳ mm ▶	kg
4508980	312000	120	0,255

## 314

Lower cupboard unit



- > For surface-protective assembling of all usual corner valves
- > With chamfered driving edges
- > With 1/2" female square drive

Code	No.	↳ mm ▶	Diameter milled slot of piston rod	kg
1147471	314000	82	27	0,15

## 3170

Installation wrench



- > For washbasin mountings
- > With moveable stud screw insert for bathroom fittings attachment M10 or M12
- > Open-ended spanner SW 17x19 mm for tightening or loosening washbasin fittings and angle valves

Code	No.	Tip size hanger bolts	Size mm	↳ mm ▶	kg
4509360	317000	M10	17x19	250	0,33
4609310	317012	M12	17x19	250	0,33

## 3175

Installation wrench



- > For washbasin mountings
- > With moveable stud screw insert for bathroom fittings attachment M10 or M12
- > With reversible ring ratchet SW 17 or SW 19 mm for tightening or loosening wash basin screw connections
- > Open-end spanner SW 19 mm for tightening or loosening angle valves

Code	No.	Tip size hanger bolts	Size mm	↳ mm ▶	kg
4509520	317500	M10	17x19	250	0,33
4609580	317512	M12	19x19	250	0,33

WWW.GEDORE.COM

## Installation Tools

### 3171 Stud screw wrench



- > For bathroom fittings attachment (stud screws) M6, M8, M10, M12
- > With pivotable thread insert

Code	No.	↳ mm ▷	⚖️
<b>4509440</b>	317100	220	0,3

### 3173 Stud screw inserter



- > Self-clamping with rotary movement
- > For the fast and easy insertion and removal of studs, bolts, etc.
- > With hexagon drive

Code	No.	Tip size hanger bolts	⚖️
<b>1523171</b>	317306	M6	0,13
<b>1523198</b>	317308	M8	0,13
<b>1523201</b>	317310	M10	0,13
<b>1523228</b>	317312	M12	0,13

### 3165 Basin wrench



- > For single lever taps and taps with central screw connection up to size 36 mm
- > With 13 mm hexagon drive and additional adaptors for 9, 10, 11 and 14 mm
- > With pivoted hook for right or left hand operation

Code	No.	↳ mm ▷	⚖️
<b>2829274</b>	316500	260	0,41

### 320000 Wrench for plumbing fittings



- > With pawl clamp
- > With exchangeable plastic jaws no. 320100, width 8 mm
- > For nickel-plated and chrome-plated fittings

Code	No.	Designation	📏	📏	↳ mm ▷	⚖️
<b>4509600</b>	320000	Wrench for plumbing fittings	65	45	275	0,72
<b>4540520</b>	320100	Set of plastic jaws				0,01

### 126008 Strap wrench



- > Very gentle to surfaces, particularly suitable for chrome-plated fittings and polished surfaces
- > light metal body, blue lacquered
- > With high-strength nylon strap

Code	No.	∅ mm	∅ inch	↳ mm ▷	mm	⚖️
<b>1468308</b>	126008	220	8"	300	27	0,325

**E 126208**  
Spare belt



- > High-strength nylon strap

Code	No.	↳ mm	mm	kg
<b>1468316</b>	126208	950	27	0,035

**376**  
Step wrench



- > For the installation and removal of valve nipples 3/8", 1/2", 3/4", 1", 1.1/4"
- > Drive via 18 mm square

Code	No.	kg
<b>4541250</b>	376100	0,245

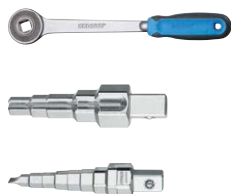
**3785**  
Plumber's wrench



- > With 14 functions for valve extensions 3/8", 1/2", 3/4", 1"
- > Depth up to 100 mm
- > For the installation and removal of radiator valves and runback screwed unions

Code	No.	↳ mm	kg
<b>4512820</b>	378500	220	0,67

**380**  
Combination stepped key



- > For the installation and removal of radiator valves, runback screwed unions 3/8" - 1" and short tap extensions
- > With pin, hexagon and bi-hexagon nut drive
- > 1/2" square drive

Code	No.	Designation	kg
<b>4512900</b>	380000	Combination stepped key No. 380100 with ratchet 1/2" No. 380200	0,555
<b>4513040</b>	380100	Combination stepped key with 5 steps 3/8"ination 1"	0,135
<b>4513120</b>	380200	Ratchet 1/2"	0,42
<b>4611130</b>	380150	Combination stepped key with 8 steps 3/8"ination 1"	0,135
<b>4630940</b>	380001	Combination stepped key No. 380150 with ratchet 1/2" No. 380200	0,555

**3810**  
Radiator valve spanner



- > Spanner for tightening and removing Euro-cone radiator compression fittings with A/F 30 mm cam lock and hex nuts
- > Short, flat version with ratchet
- > Head-side mounting option for 1/2" extension. The extension serves as a handle and at the same time provides a higher torque

- > Lateral mounting possibility for 1/2" extension for working with the ratchet in front of the radiator
- > Socket for no. 3801 combination stepped key 3/4" radiator valve nipples
- > DBGM (German utility patent)

Code	No.	Designation	kg
<b>2233665</b>	381030	Radiator valve spanner, single	0,225
<b>2233673</b>	381000	Radiator valve spanner set	0,39